

High Speed Camera

G_Pro Series

4K Movie Grade Digital HD High Speed Camera



Features and Highlights

Movie quality

The G_Pro series uses a high-sensitivity full-frame 12BitCMOS sensor that provides ten million effective pixels and a wide dynamic range, restoring high-speed transient events while guaranteeing a sense of gradation and color in high-definition images.

Continuous recording capability

G_Pro series adopts self-developed super-large storage SSD, which supports up to 20TB, and adopts Flash array parallel control to optimize the data interface timing, so that the storage unit can give full play to the bandwidth performance, and continuously record transient events and wonderful shots.

Flexible and portable

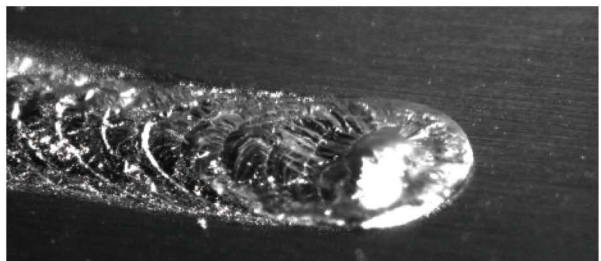
G_Pro series adopts a new generation of hardware architecture, with the configuration of rich housing interface design, easy to integrate platform, microscope, endoscope and other combinations of use, but also can support wireless control and battery-driven, so that the outdoor high-speed shooting become friendly and portable.

Typical Application

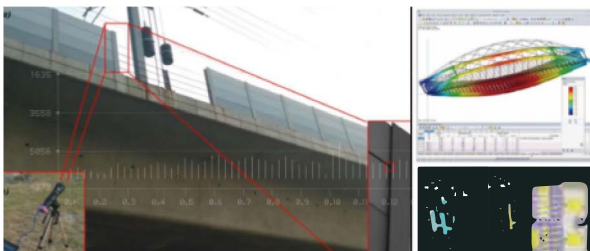
Film and sports



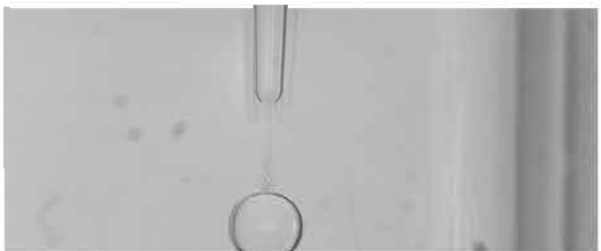
Welding



Large field of view strain field measurement



Microfluidics



Shooting Speed and Exposure Time

SKU	G820M/C_Pro	G520M/C_Pro	G2110M/C_Pro
Sensor type	CMOS	CMOS	CMOS
Bit depth	8-10-12Bit optional	8Bit	8-10-12Bit optional
Maximum resolution	4096×2048	2560×1920	5120×4096
Minimum FPS	2000fps	2000fps	1000fps
Maximum FPS	28000fps	20000fps	27000fps
Electronic shutter	Global shutter	Global shutter	Global shutter
Maximum exposure	1μs	1μs	1μs
Auto-exposure	Support	Support	Support

Resolution-Frame Rate-Recording Time-8Bit

SKU	G820M/C_Pro		G520M/C_Pro		G2110M/C_Pro	
	Max. frame rate-fps	Recording time-s	Max. frame rate-fps	Recording time-s	Max. frame rate-fps	Recording time-s
5120×4096	-	-	-	-	1000	5
4096×2048	2000	6	-	-	1950	6
2560×1920	2000	9	2000	2.78	1950	9
1920×1080	3600	13	3300	3.68	3500	13
1280×1024	3800	19	3500	5.82	3600	20
800×600	6100	31	5400	10.38	5800	33
640×512	6900	46	5200	16.38	6100	52
256×128	17700	178	14400	92.21	17100	184

Note: Recording time is measured by 96GB, other memory versions such as 192GB can be multiplied by 2.

Resolution-Frame Rate-Recording Time-10Bit

SKU	G820M/C_Pro		G2110M/C_Pro	
	Max. frame rate-fps	Recording time-s	Max. frame rate-fps	Recording time-s
5120×4096	-	-	500	7
4096×2048	1000	9	990	9
2560×1920	1000	15	1000	15
1920×1080	1900	20	1800	21
1280×1024	2000	29	1900	31
800×600	3300	46	3100	35
640×512	3800	66	3500	72
256×128	11100	226	10400	241

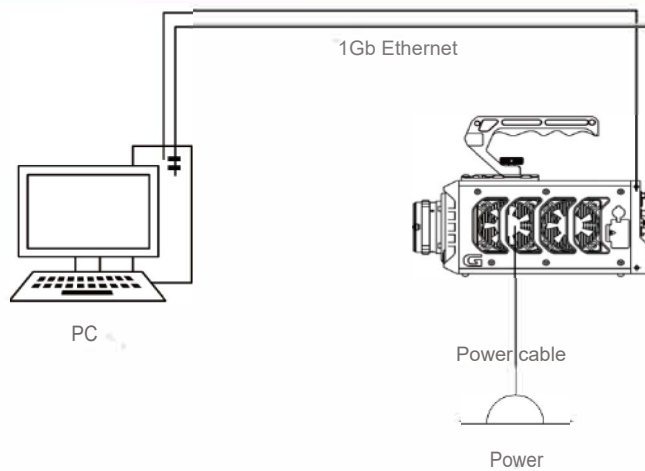
Note: Recording time is measured by 96GB, other memory versions such as 192GB can be multiplied by 2.

Resolution-Frame Rate-Recording Time-12Bit

SKU	G820M/C_Pro		G2110M/C_Pro	
	Max. frame rate-fps	Recording time-s	Max. frame rate-fps	Recording time-s
5120×4096	-	-	250	12
4096×2048	500	15	490	15
2560×2016	500	25	500	25
1920×1080	900	35	900	35
1280×1024	990	49	950	51
800×600	1600	79	1600	79
640×512	1900	112	1800	118
256×128	6100	344	5900	356

Note: Recording time is measured by 96GB, other memory versions such as 192GB can be multiplied by 2.

Hardware System



Memory

Model	G820M/C_Pro	G520M/C_Pro	G2110M/C_Pro
High-speed internal RAM	96GB/192GB	96GB/192GB	96GB/192GB
Built-in non-volatile storage (optional)	1/2/10/20TB	1/2/10/20TB	1/2/10/20TB

Mechanical

Model	G820M/C_Pro	G520M/C_Pro	G2110M/C_Pro
Lens interface	F,C,EF	F,C,EF	F,C,EF
Size W×H×D	110×110×205mm	110×110×205mm	110×110×205mm
Weight	≤3500g	≤3500g	≤3500g
Mounting holes	Top: Two 1/4 holes, six M4 holes; Side: Four M4 holes; Bottom: Four 1/4 holes, six M4 holes.		
Cooling	Fan, can be turned off	Fan, can be turned off	Fan, can be turned off

Power

Model	G820M/C_Pro	G520M/C_Pro	G2110M/C_Pro
AC power	24VDC	24VDC	24VDC

Environmental

Model	G820M/C_Pro	G520M/C_Pro	G2110M/C_Pro
Operating temperature	-10~50°C	-10~50°C	-10~50°C
Operating humidity	0-95%	0-95%	0-95%
Protection	IP64	IP64	IP64
Impact resistance	Pass 30Grms @11ms	Pass 30Grms @11ms	Pass 30Grms @11ms
Anti-vibration	3 axes, 6 directions, 60 pulses	3 axes, 6 directions, 60 pulses	3 axes, 6 directions, 60 pulses

Quality Service

- Worldwide service
- Professional technical support
- Strong custom development capability
- Fast shipping within 14 working days for standard products
- 24-hour after-sales service
- Promises 1 month fast repair within the warranty period, will provide a substitute device if can not repair it within this time

Installation Drawing

